



STdecor  
Stretch Fabric Catalog



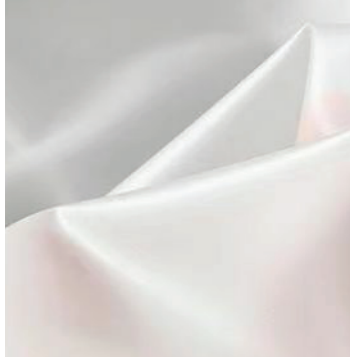
## About us

ST Decor is a Bangkok-based distributor of LED lighting, innovative construction materials, and interior wall coverings, serving clients across Thailand and neighboring countries. With a proven track record in diverse applications, we have earned a reputation as a reliable and professional partner in the industry.

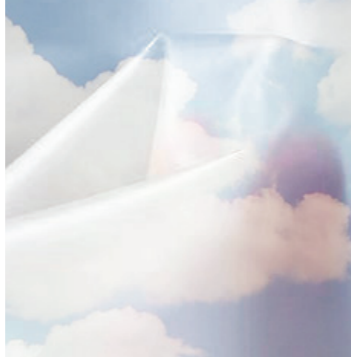
We cater to the premium market, including hotels, residences, restaurants, offices, and commercial spaces. Beyond distribution, we offer expert technical and design consultancy to meet our clients' specific requirements. Our products are carefully selected from global sources and can be customized for unique design needs. We are committed to continuous staff development to ensure exceptional service and total customer satisfaction.

ST decor

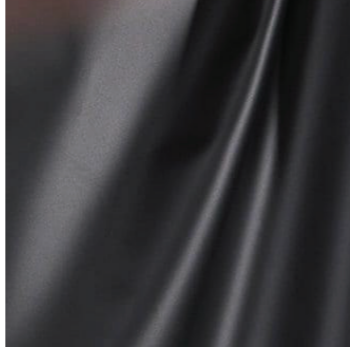
# Contents



4011  
TRANSLUCENT  
WHITE 01



4011  
TRANSLUCENT  
WHITE UV-PRINT 02



9015  
TRANSLUCENT  
BLACK 03



GLOSSY 10



SATIN 11



MIRROR95 12



9015  
TRANSLUCENT  
BLACK UV-PRINT 04



FIBERGLASS 05



FIBERGLASS  
UV-PRINT 06



FABRIC  
PROFILE 15-34



PROJECTS  
REFERENCE 35-50



CALYPSO 07



CALYPSO  
UV-PRINT 08



MATT 09



**ST**decor

## 4011 Translucent White

4011 Translucent White fabric is a premium-grade engineered textile designed for modern architectural applications, focusing on superior and uniform light diffusion. Constructed from high-tenacity polyester fibers with a specialized coating, it meets the B1 Fire Retardant standard. This ensures maximum safety for indoor installations in public spaces, luxury hotels, and high-end international exhibitions.

### Technical Data

- |                                 |                               |                             |  |
|---------------------------------|-------------------------------|-----------------------------|--|
| • Material                      | : PVC Non woven fabric        | • Weight                    | : 230 g/m <sup>2</sup> - 260 g/m <sup>2</sup>  |
| • Light Transmissio             | : 40-42%                      | • Elongation at break       | : 200%   |
| • Combustibility & Flammability | : B1 EN13501-1:2018           | • Breaking Strength         | : 1,500 - 2,200 N / 5 cm                       |
| • Thickness                     | : 0.25 mm - 0.30 mm           | • Resistance of Temperature | : -20°C to +70°C                               |
| • Width of Rolls                | : 6.00m (Seamless Capability) | • Hygiene                   | : Non porous membrane. Anti-microbial. Low VOC |

### Color



Translucent White



**ST**decor

## 4011 Translucent White UV-Print

4011 Translucent White UV-Print fabric is a premium-grade textile specifically engineered for high-definition UV printing applications. It excels in delivering soft and uniform light diffusion, making it the ideal choice for premium lightboxes and stretch ceiling systems. Certified with B2 Fire Retardant standards, it ensures maximum safety for indoor installations in public spaces, shopping malls, and high-end exhibitions.

### Technical Data

- |                                 |                               |                             |  |
|---------------------------------|-------------------------------|-----------------------------|--|
| • Material                      | : PVC Non woven fabric        | • Weight                    | : 245 g/m <sup>2</sup> - 270 g/m <sup>2</sup>  |
| • Light Transmissio             | : 35-38%                      | • Elongation at break       | : 200%   |
| • Combustibility & Flammability | : B2 EN13501-1:2018           | • Breaking Strength         | : 1,500 - 2,200 N / 5 cm                       |
| • Thickness                     | : 0.25 mm - 0.30 mm           | • Resistance of Temperature | : -10°C to +50°C                               |
| • Width of Rolls                | : 5.80m (Seamless Capability) | • Hygiene                   | : Non porous membrane. Anti-microbial. Low VOC |

### Color



Translucent White, Ecosolvent UV-Printing



# STdecor

## 9015 Translucent Black

9015 Translucent black B2 fabric introduces a new dimension to architectural design with its innovative "Black Translucent" properties. It perfectly blends modern mystery with sophisticated lighting effects. While appearing as a sleek, solid black surface when unlit, it allows soft, diffused light to pass through when backlit. Certified with B2 Fire Retardant standards, it is the premier choice for luxury ceilings, wall features, and exclusive event designs seeking a unique signature look.

### Technical Data

- Material : PVC Non woven fabric
- Light Transmissio : 18-22%
- Combustibility & Flammability : B2 EN13501-1:2018
- Thickness : 0.18 mm - 0.22 mm
- Width of Rolls : 3.20m (Seamless Capability)
- Weight : 210 g/m<sup>2</sup> - 230 g/m<sup>2</sup>
- Elongation at break : 200%
- Breaking Strength : 1,200 - 1,500 N / 5 cm
- Resistance of Temperature : -20°C to +70°C
- Hygiene : Non porous membrane. Anti-microbial. Low VOC

### Color



Translucent Black



# STdecor

## 9015 Translucent Black UV-Print

9015 Translucent black UV-Print fabric is an innovative black translucent textile optimized for high-end UV printing. It presents a sleek black surface under ambient light and transforms into a stunning, soft-glow backlit display when lit from behind. Certified with B2 Fire Retardant standards, it is the ultimate premium choice for luxury interior features and sophisticated backlit signage.

### Technical Data

- Material : PVC Non woven fabric
- Light Transmissio : 15-20%
- Combustibility & Flammability : B2 EN13501-1:2018
- Thickness : 0.18 mm - 0.22 mm
- Width of Rolls : 3.20m (Seamless Capability)
- Weight : 215 g/m<sup>2</sup> - 235 g/m<sup>2</sup>
- Elongation at break : 200%
- Breaking Strength : 1,200 - 1,500 N / 5 cm
- Resistance of Temperature : -10°C to +50°C
- Hygiene : Non porous membrane. Anti-microbial. Low VOC

### Color



Translucent Black, Ecosolvent UV-Printing



# STdecor

## Fiberglass

Fiberglass Fire-rated Fabric sets the benchmark in safety-driven textiles. Made from high-purity fiberglass with advanced nano-coating, it achieves the highest A1 non-combustible rating. Designed for strict fire-regulated environments such as tunnels, subways, hospitals, and high-rise buildings, it ensures maximum safety while maintaining aesthetics and uniform light transmission

### Technical Data

- |                                 |                                  |                             |                                   |
|---------------------------------|----------------------------------|-----------------------------|-----------------------------------|
| • Material                      | : Fiberglass Woven Fabric        | • Weight                    | : 280 g/m <sup>2</sup>            |
| • Light Transmissio             | : 42% - 45%                      | • Elongation at break       | : 120%                            |
| • Combustibility & Flammability | : A1 (Non-combustible)EN 13501-1 | • Breaking Strength         | : 2,200 - 2,500 N / 5 cm          |
| • Thickness                     | : 0.16 mm - 0.18 mm              | • Resistance of Temperature | : -30°C to +200°C                 |
| • Width of Rolls                | : 4.0 m                          | • Hygiene                   | : Anti-microbial Coating. Low VOC |

### Color



Natural White



# STdecor

## Fiberglass UV-Print

Fiberglass UV-Print fabric is a top-tier engineered textile crafted from pure fiberglass, certified with the highest A1 Non-combustible rating. It features a specialized surface optimized for UV-curable printing, ensuring vibrant colors and superior ink adhesion. Ideal for premium backlit displays and stretch ceilings in fire-sensitive environments like airports, hospitals, and public facilities.

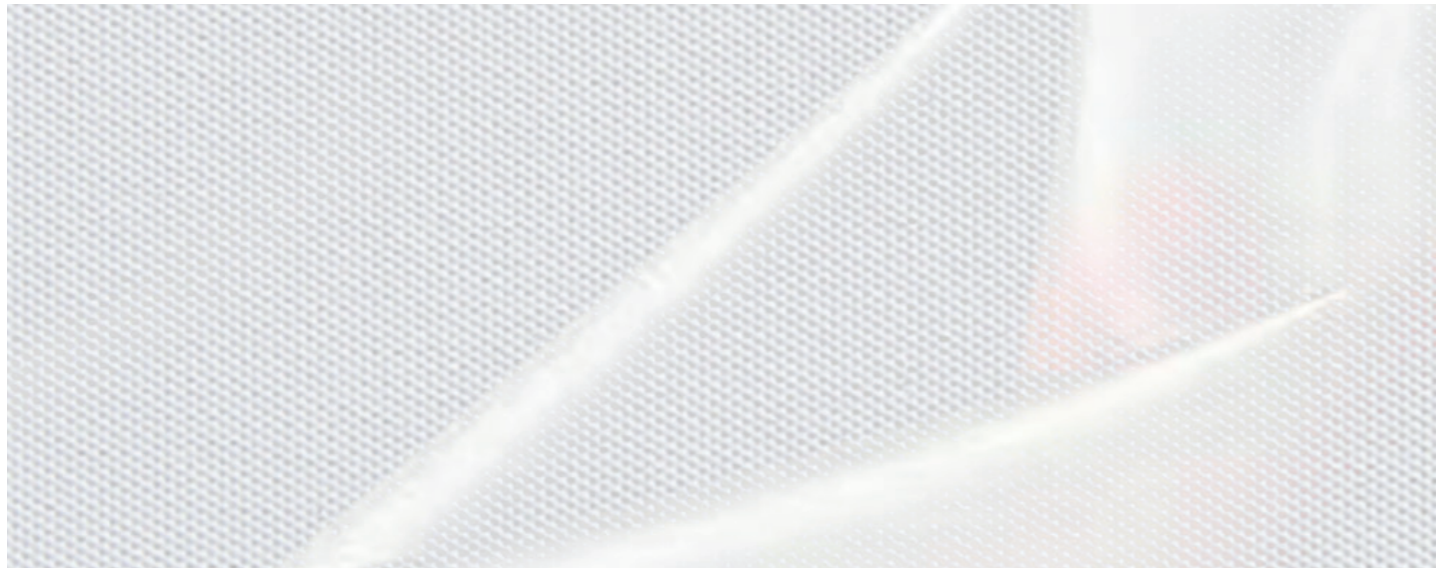
### Technical Data

- |                                 |                                  |                             |                                   |
|---------------------------------|----------------------------------|-----------------------------|-----------------------------------|
| • Material                      | : Fiberglass Woven Fabric        | • Weight                    | : 285 g/m <sup>2</sup>            |
| • Light Transmissio             | : 35% - 38%                      | • Elongation at break       | : 120%                            |
| • Combustibility & Flammability | : A1 (Non-combustible)EN 13501-1 | • Breaking Strength         | : 2,200 - 2,500 N / 5 cm          |
| • Thickness                     | : 0.16 mm - 0.18 mm              | • Resistance of Temperature | : -30°C to +200°C                 |
| • Width of Rolls                | : 4.0m                           | • Hygiene                   | : Anti-microbial Coating. Low VOC |

### Color



Natural White,  
Ecosolvent UV-Printing



# STdecor

## Calypso

Calypso fabric is an emblem of luxury in architectural and interior design. This high-performance textile is specifically engineered to provide an exceptionally soft and fine light diffusion, creating a sophisticated and comfortable ambiance. Featuring a B2 Fire Retardant certification, it ensures superior safety for high-end hotel interiors, luxury retail spaces, and premium showrooms where the perfect blend of surface texture and lighting is paramount.

### Technical Data

- Material : PU Coated Polyester Mesh Woven Fabric
- Light Transmissio : 40% - 42%
- Combustibility & Flammability : B2 EN13501-1:2018
- Thickness : 0.20 mm - 0.22 mm
- Width of Rolls : 3.2 m
- Weight : 210 g/m<sup>2</sup>
- Elongation at break : 110%
- Breaking Strength : 1,600 - 1,900 N / 5 cm
- Resistance of Temperature : -20°C to +50°C
- Hygiene : Anti-microbial Coating. Low VOC

### Color



Neutral White



# STdecor

## Calypso UV-Print

Calypso UV-Print is an emblem of luxury in architectural and interior design. This high-performance textile is specifically engineered to provide an exceptionally soft and fine light diffusion, creating a sophisticated and comfortable ambiance. Featuring a B2 Fire Retardant certification, it ensures superior safety for high-end hotel interiors, luxury retail spaces, and premium showrooms where the perfect blend of surface texture and lighting is paramount.

### Technical Data

- Material : PU Coated Polyester Mesh Woven Fabric
- Light Transmissio : 36% - 38%
- Combustibility & Flammability : B2 EN13501-1:2018
- Thickness : 0.20 mm - 0.22 mm
- Width of Rolls : 3.2 m
- Weight : 215 g/m<sup>2</sup>
- Elongation at break : 110%
- Breaking Strength : 1,600 - 1,900 N / 5 cm
- Resistance of Temperature : -20°C to +50°C
- Hygiene : Anti-microbial Coating. Low VOC

### Color



Neutral White, UV-Printing



# STdecor

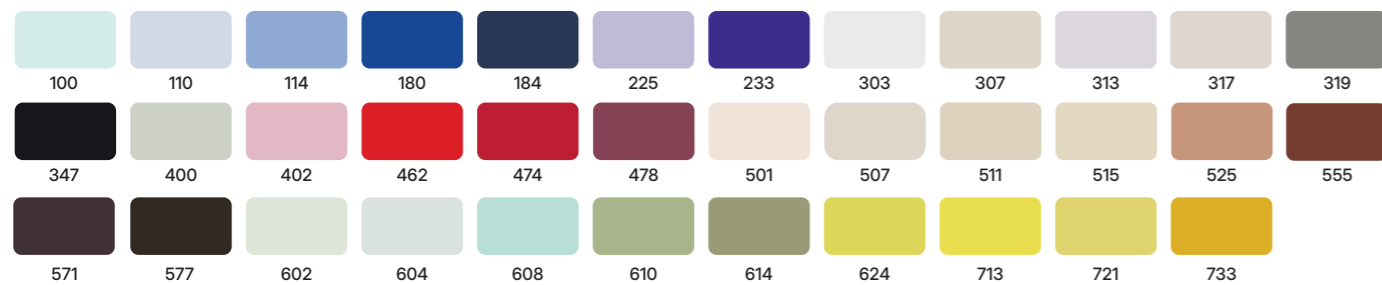
## Matt

Matte fabric offers an understated elegance with its specialized ultra-matte finish, meticulously designed to eliminate unwanted light reflections. This material is the ideal choice for interior projects that demand a clean, soft, and minimalist aesthetic—such as anti-glare ceilings, partitions, and wall features. With its high-density weave and consistent color rendering under various lighting conditions, it creates a natural, sophisticated ambiance for any professional or residential space.

### Technical Data

- Material : PVC Non woven fabric
- Light Transmissio : 2%-3%
- Combustibility & Flammability : B2 EN13501-1:2018
- Thickness : 0.25 mm - 0.30 mm
- Width of Rolls : 5.80m (Seamless Capability)
- Weight : 280 g/m<sup>2</sup> - 300 g/m<sup>2</sup>
- Elongation at break : 200%
- Breaking Strength : 1,500 - 2,200 N / 5 cm
- Resistance of Temperature : -20°C to +70°C
- Hygiene : Non porous membrane. Anti-microbial. Low VOC

### Color



# STdecor

## Glossy

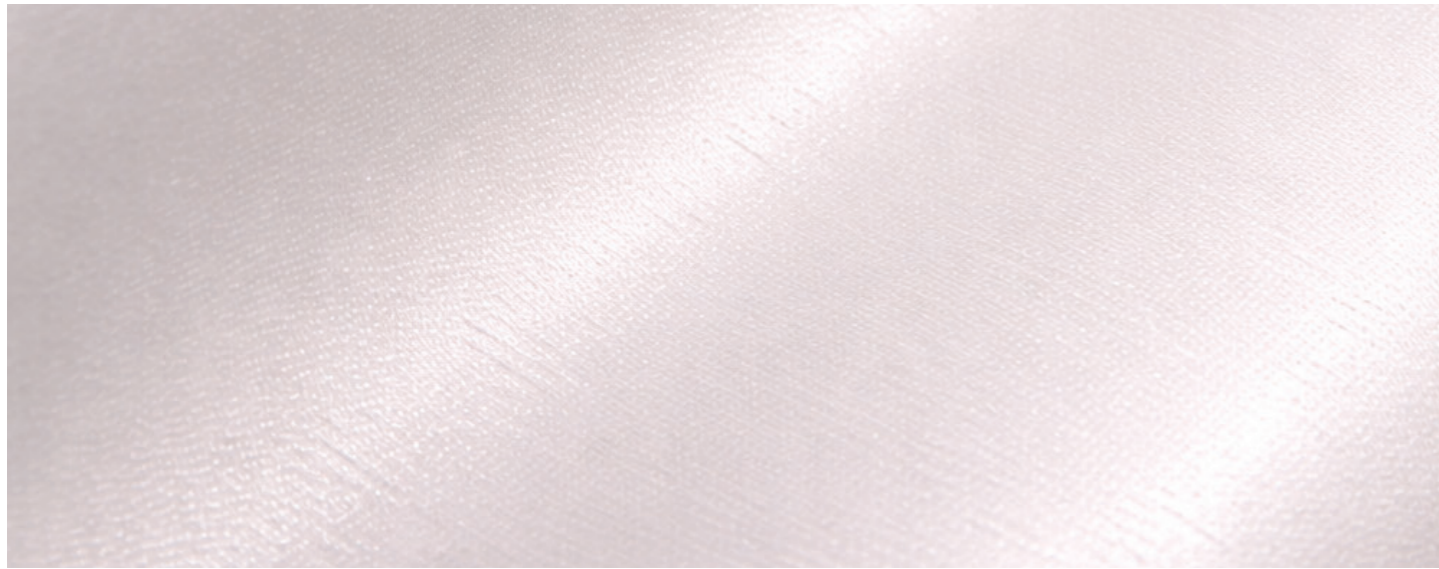
Glossy fabric elevates architectural design with the allure of a high-end, polished finish. Its surface is treated with advanced high-gloss coating technology, creating a mirror-like effect that reflects light and surroundings to enhance the perception of space and depth. This material is perfectly suited for luxury stretch ceilings in lobbies, high-end retail malls, and premium showrooms where a sense of modern sophistication and a signature luxury look are desired.

### Technical Data

- Material : PVC Non woven fabric
- Light Transmissio : 2%-3%
- Combustibility & Flammability : B2 EN13501-1:2018
- Thickness : 0.25 mm - 0.30 mm
- Width of Rolls : 5.80m (Seamless Capability)
- Weight : 260 g/m<sup>2</sup> - 280 g/m<sup>2</sup>
- Elongation at break : 200%
- Breaking Strength : 1,500 - 2,200 N / 5 cm
- Resistance of Temperature : -20°C to +70°C
- Hygiene : Non porous membrane. Anti-microbial. Low VOC

### Color





# STdecor

## Satin

Satin fabric offers the perfect balance between luxury and visual comfort. Its specialized semi-gloss, semi-matte surface (Satin Finish) provides soft light diffusion while significantly reducing harsh reflections, all while maintaining the vibrant clarity of the fabric. This material is ideal for architectural ceilings and interior designs seeking a modern, refined, and sophisticated look. It delivers a sense of understated luxury, creating a classic and high-end ambiance for any environment.

### Technical Data

- Material : PVC Non woven fabric
- Light Transmissio : 2% -3%
- Combustibility & Flammability : B2 EN13501-1:2018
- Thickness : 0.25 mm - 0.30 mm
- Width of Rolls : 4.00m (Seamless Capability)
- Weight : 260 g/m<sup>2</sup> - 280 g/m<sup>2</sup>
- Elongation at break : 200%
- Breaking Strength : 1,500 - 2,200 N / 5 cm
- Resistance of Temperature : -20°C to +70°C
- Hygiene : Non porous membrane. Anti-microbial. Low VOC

### Color



# STdecor

## Mirror95

Mirror fabric revolutionizes interior design with its innovative high-reflectivity mirror-effect textile. It delivers a sharp, clear reflection comparable to traditional glass mirrors but at a fraction of the weight. Engineered using advanced metallic film coating on a stabilized polymer base, this material is ideal for ceiling installations, exhibitions, and luxury showrooms seeking to enhance spatial perception and modern aesthetics. It offers a safe, shatterproof, and easy-to-install alternative to heavy glass mirrors without compromising on visual impact.

### Technical Data

- Material : Double foil fabric
- Light Transmissio : 8%-10%
- Combustibility & Flammability : B2 EN13501-1:2018
- Thickness : 0.15 mm - 0.17 mm
- Width of Rolls : 3.20m (Seamless Capability)
- Weight : 160 g/m<sup>2</sup> - 180 g/m<sup>2</sup>
- Elongation at break : 110%
- Breaking Strength : 800 - 950 N / 5 cm
- Resistance of Temperature : -20°C to +70°C
- Hygiene : Non porous membrane. Anti-microbial. Low VOC

### Color



## Fabric Profile

Fabric Profile is a framing system for tension fabric installations on walls and ceilings, offering exceptional flexibility to create flat, curved, or free-form surfaces with a seamless and refined finish.

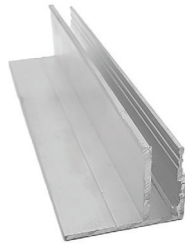


STdecor

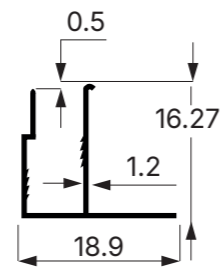
# STdecor

## FABRIC PROFILE F2

FBP-F2



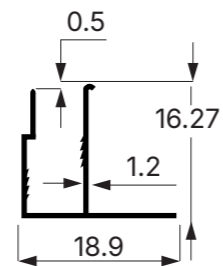
DIMENSION



FBP-F2-Hole



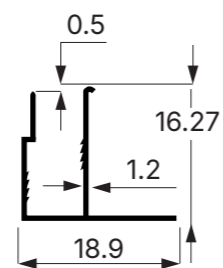
DIMENSION



FBP-F2-Bend



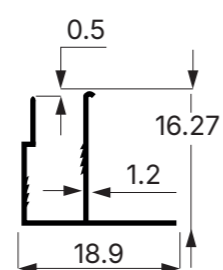
DIMENSION



FBP-F2-Bend+Hole



DIMENSION



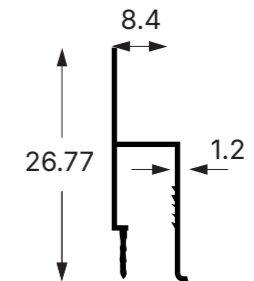
# STdecor

## FABRIC PROFILE H2/1.2

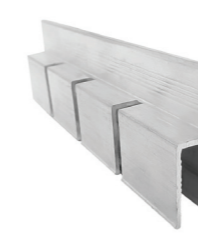
FBP-H2/1.2



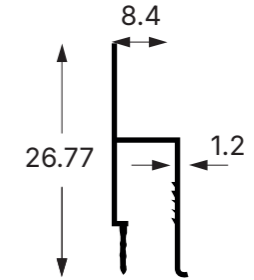
DIMENSION



FBP-H2/1.2-Bend



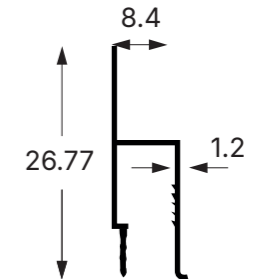
DIMENSION



FBP-H2/1.2-Hole



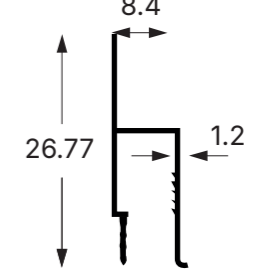
DIMENSION



FBP-H2/1.2-Bend+Hole



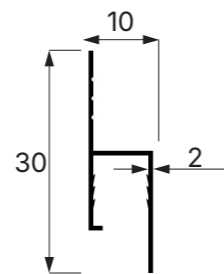
DIMENSION



FBP-H3/2.0



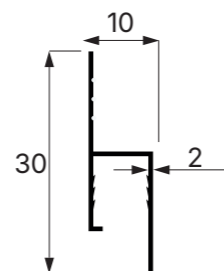
DIMENSION



FBP-H3/2.0-Bend



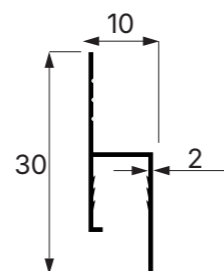
DIMENSION



FBP-H3/2.0-Hole



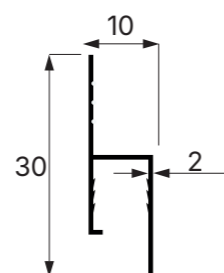
DIMENSION



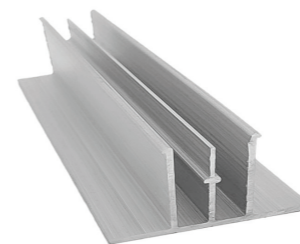
FBP-H3/2.0-Bend+Hole



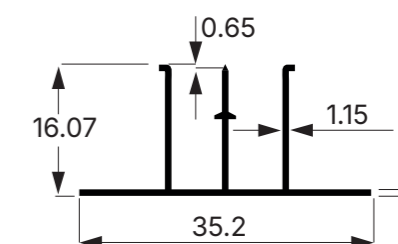
DIMENSION



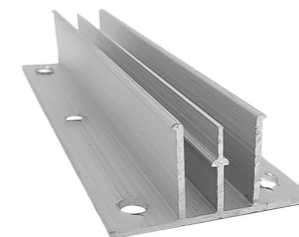
FBP-M



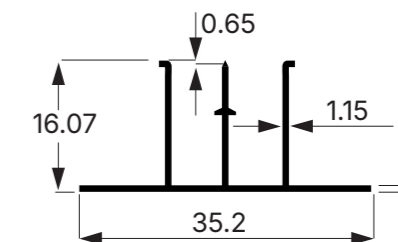
DIMENSION



FBP-M-Hole



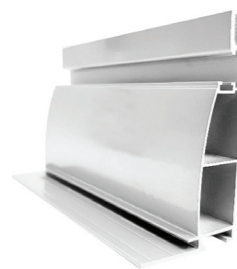
DIMENSION



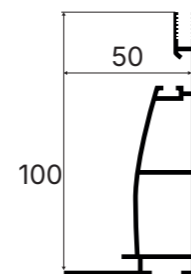
# STdecor

## Lightbox Profile L / LS / LS-E

FBP-L100



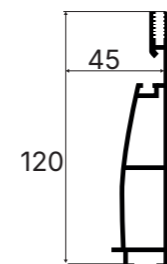
DIMENSION



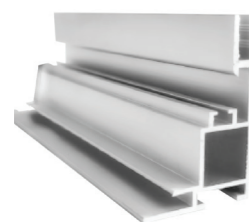
FBP-L120



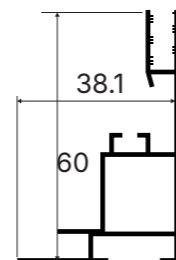
DIMENSION



FBP-LS60



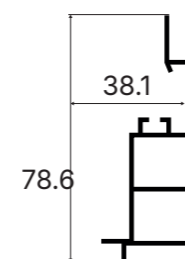
DIMENSION



FBP-LS80



DIMENSION



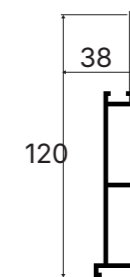
# STdecor

## Lightbox Profile L / LS / LS-E

FBP-LS150



DIMENSION



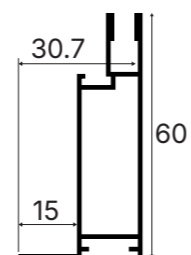
# STdecor

## Lightbox Profile L / LS / LS-E

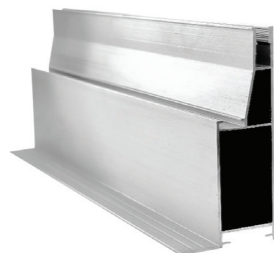
FBP-LS0612-E



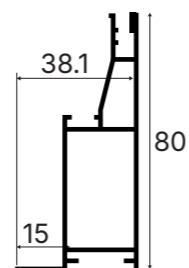
DIMENSION



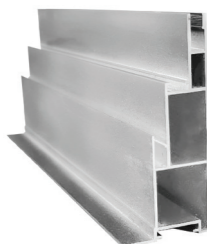
FBP-LS0812-E



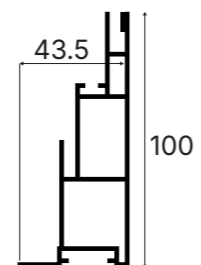
DIMENSION



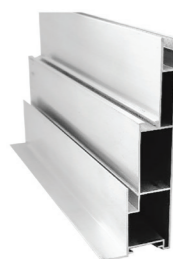
FBP-LS1015-E



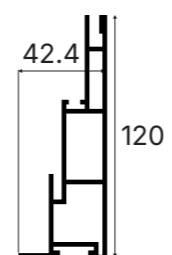
DIMENSION



FBP-LS1215-E



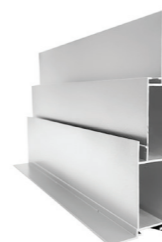
DIMENSION



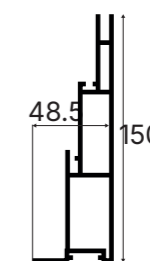
# STdecor

## Lightbox Profile L / LS / LS-E

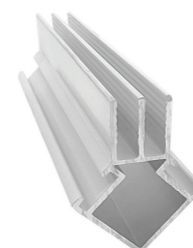
FBP-LS1515-E



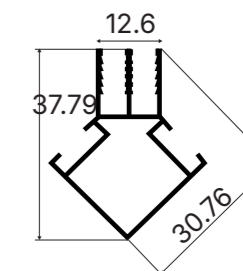
DIMENSION



FBP-OMNI



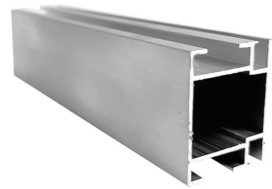
DIMENSION



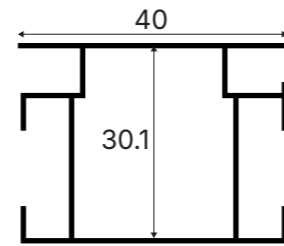
# STdecor

## Fabric Profile A

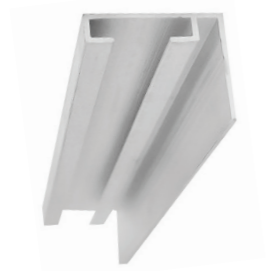
FBP-A-U



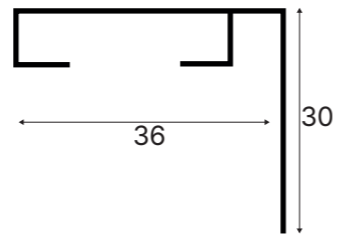
DIMENSION



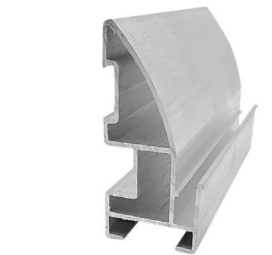
FBP-A-UL



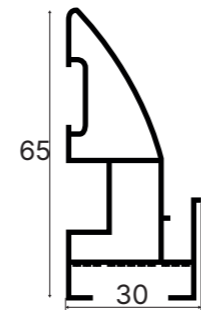
DIMENSION



FBP-A-D



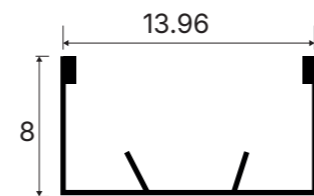
DIMENSION



FBP-AMC-D



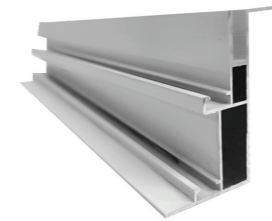
DIMENSION



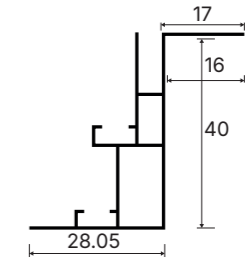
# STdecor

## Fabric Profile Trim Recessed KB

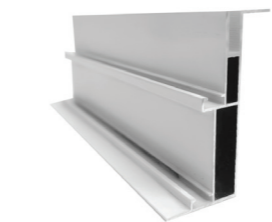
FBP-KB40-TR



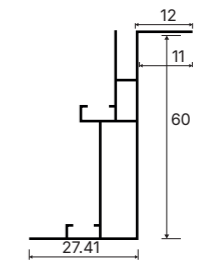
DIMENSION



FBP-KB60-TR



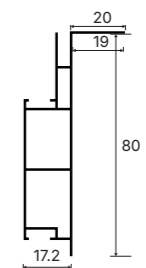
DIMENSION



FBP-KB80-TR



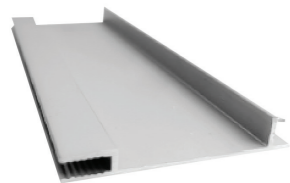
DIMENSION



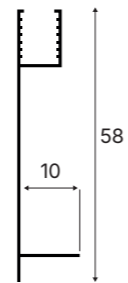
# STdecor

## Fabric Profile WY

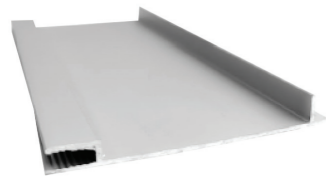
FBP-WY60-D



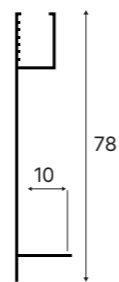
DIMENSION



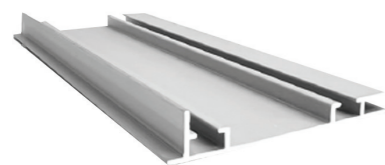
FBP-WY80-D



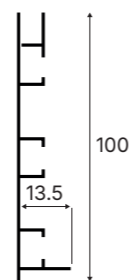
DIMENSION



FBP-WY100-D



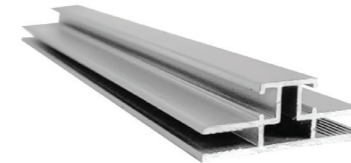
DIMENSION



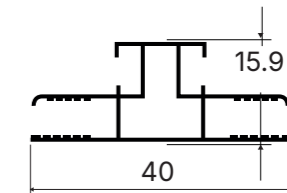
# STdecor

## Fabric Profile KB-Double

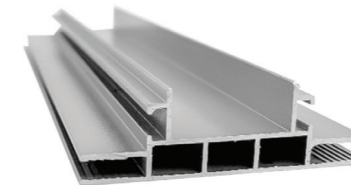
FBP-KB40-D



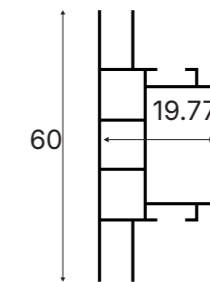
DIMENSION



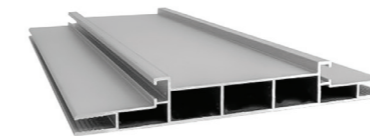
FBP-KB60-D



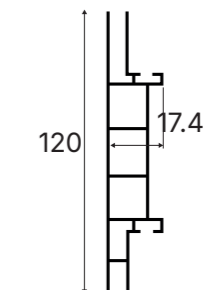
DIMENSION



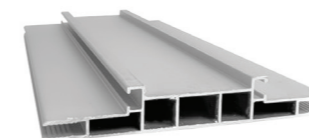
FBP-KB80-D



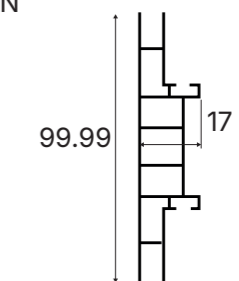
DIMENSION



FBP-KB100-D

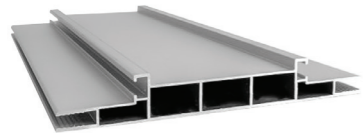


DIMENSION

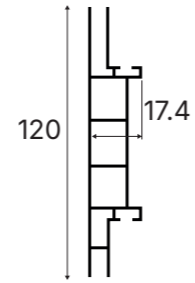


## Fabric Profile KB-Double

FBP-KB120-D

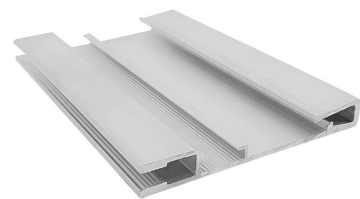


DIMENSION

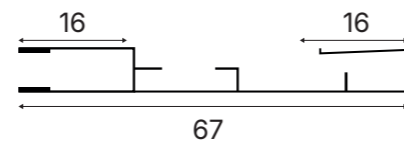


## FABRIC PROFILE 2H DOUBLE LAYER

FBP-2H

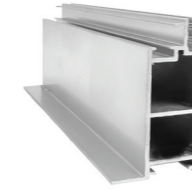


DIMENSION

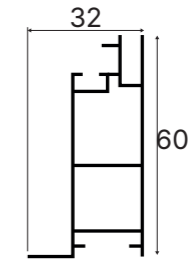


## Fabric Profile LE

FBP-LE60



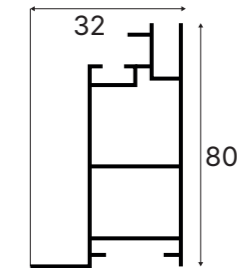
DIMENSION



FBP-LE80



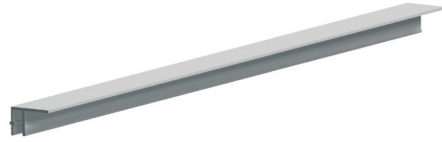
DIMENSION



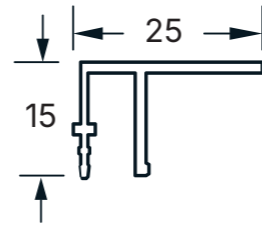
# STdecor

## ALUMINIUM

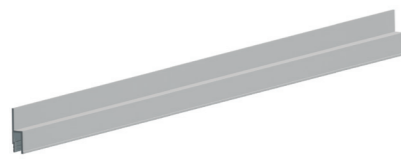
F PROFILE



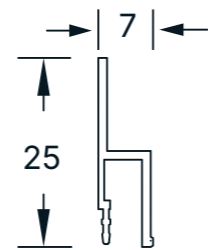
DIMENSION



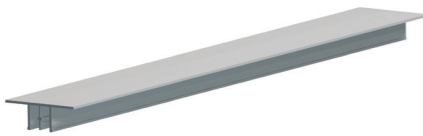
H PROFILE



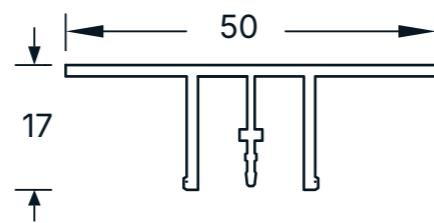
DIMENSION



M PROFILE



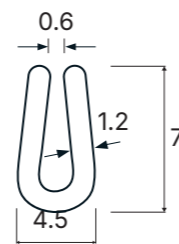
DIMENSION



U Cover



DIMENSION



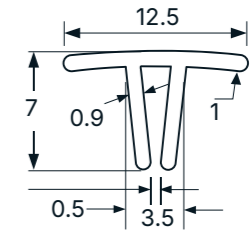
# STdecor

## ALUMINIUM

T COVER



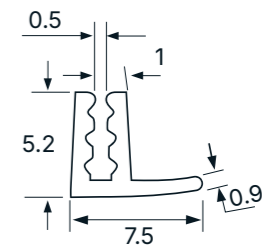
DIMENSION



F COVER



DIMENSION



# ST decor

## Fabric Profile, MH

FBP-MH



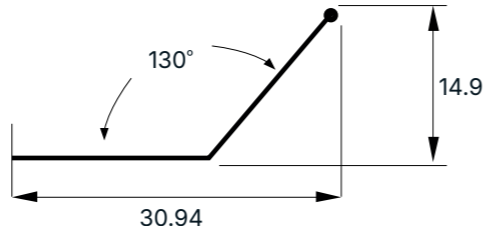
DIMENSION



FBP-MH(H)



DIMENSION



FBJ-A-HINGE1R



FBJ-B-WALL



FBJ-PD5/27EB-M6



FBJ-A-HINGE1L



FBJ-B-L



FBJ-A-SPRING1



FBJ-A-HINGE2



FBJ-C14/032



FBJ-A-SPRING2



FBJ-B-SPRING



FBJ-C24/070



FBJ-A-QL



FBFJ-25-45U



FBFJ-25-45D



FBJ-PD19/120-M6



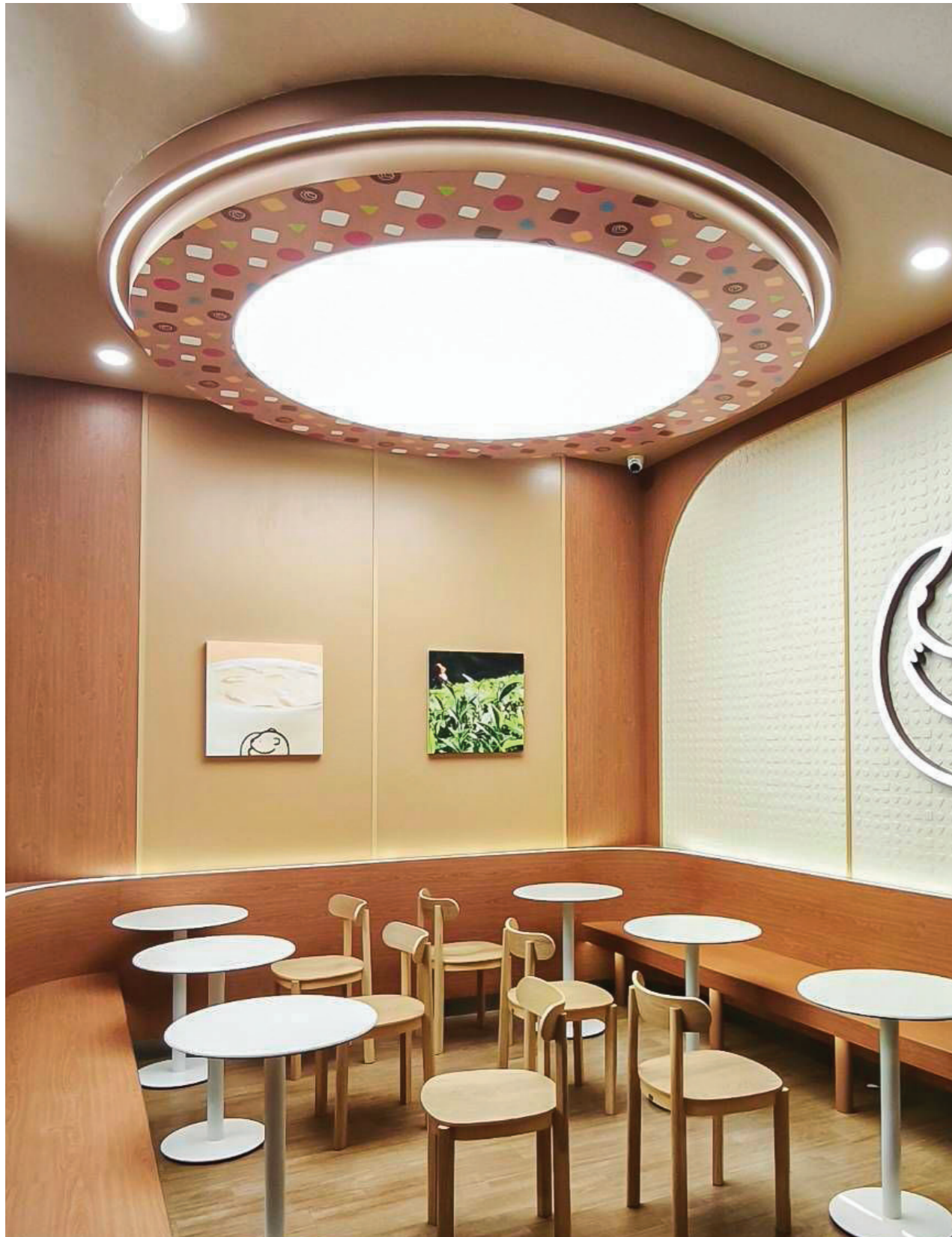


## Projects Reference

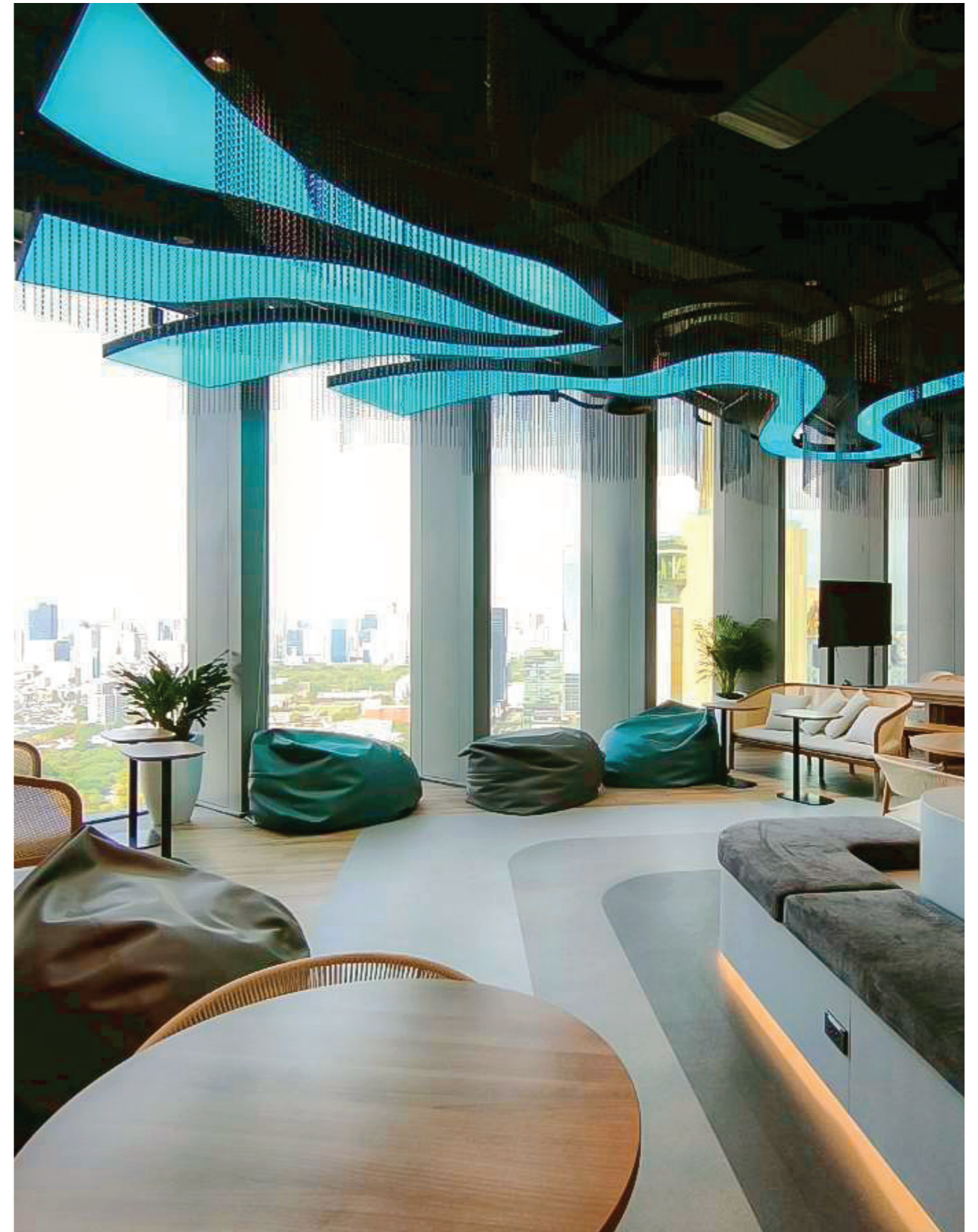
ST decor, we take great pride in transforming our clients' visions into stunning, functional spaces. By combining meticulously selected light-diffusing fabrics with our expert installation techniques, we ensure every project achieves a flawless finish and meets the highest standards of quality and excellence.

ST decor

Bear House Chiang Rai



Adidas River Zone



Adidas



Chery Showroom in Theparak



On Cloud Iconsiam



STdecor

True Digital Park



STdecor

REV RUNNER CENTRAL WORLD



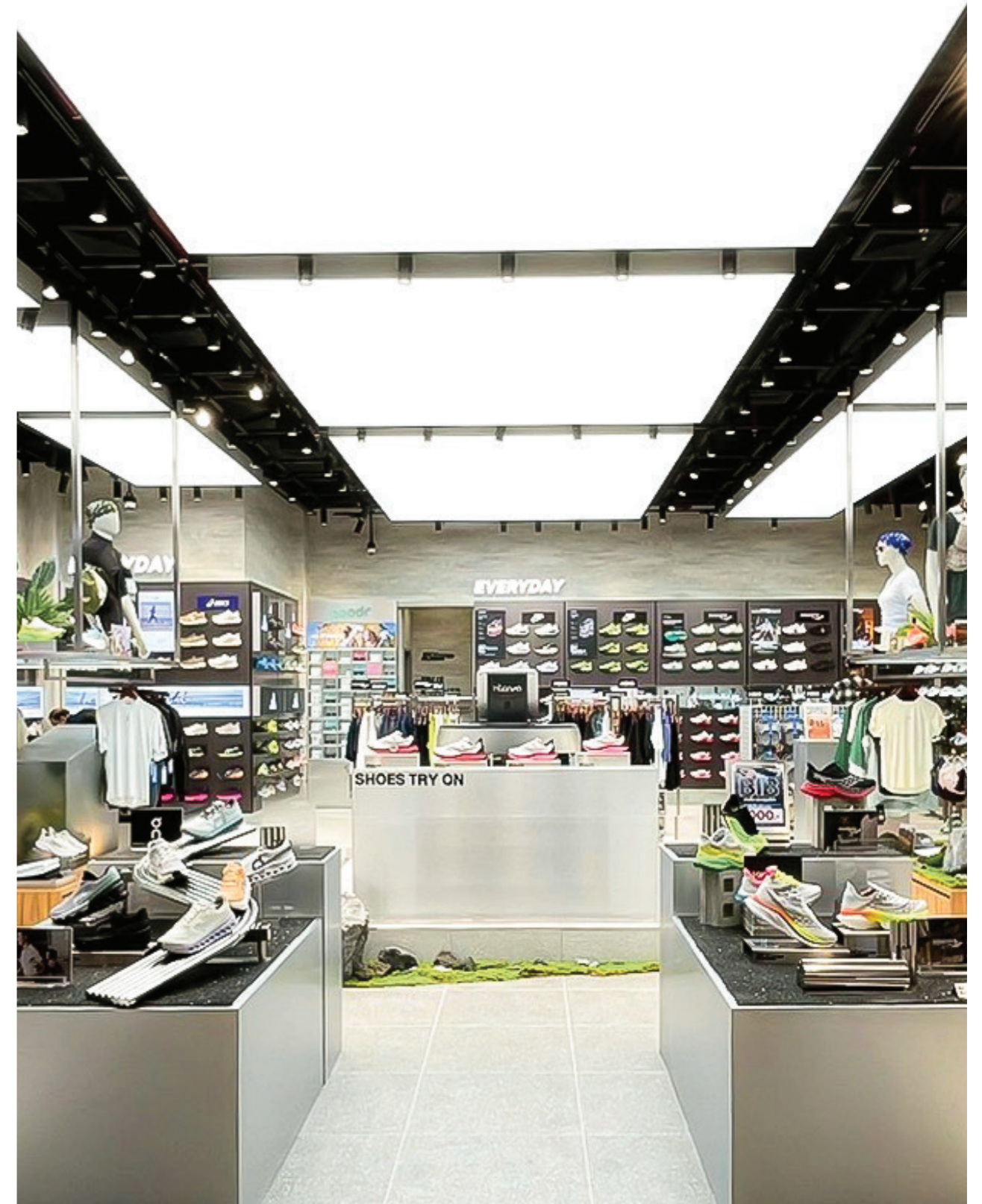
Rev Runner Central Pattaya



Rev Runner Fashion Island



Rev Runner Zpell Future Park



Happitat



ST **decor**

Izakaya in Ekamai



ST **decor**

